

Important On-Site Early American Estate Auction

Allen & Marshall Auctioneers honored to be selling for the Estate of the late Mrs. Barbara Lindenkohl of Salisbury, MD!
Saturday, November 21st, 2009 at 10:00 AM

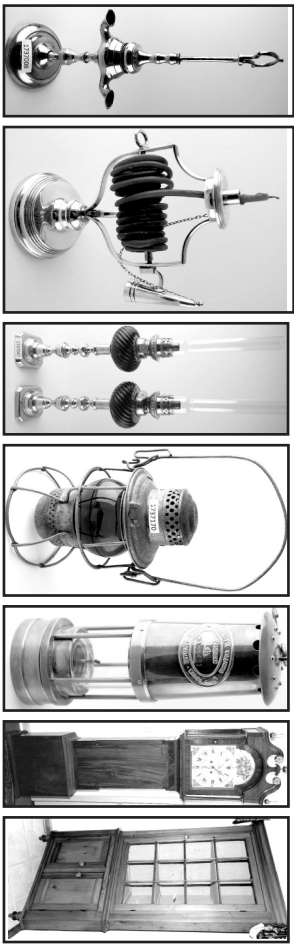
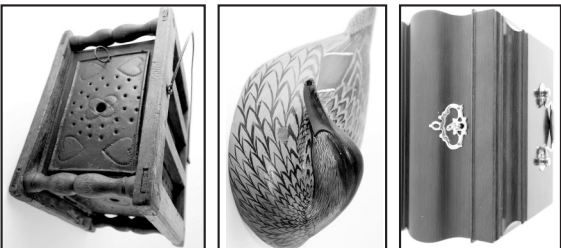
30077 Rolling Meadows Rd., Salisbury, MD 21804

ALL ITEMS SOLD ABSOLUTE WITH NO MINIMUM AND NO RESERVE!!

Exquisite Selection of Early American Lighting, Late 18th Century and Early 19th Century Furniture, Sterling, Primitives, Rugs, Art and more!

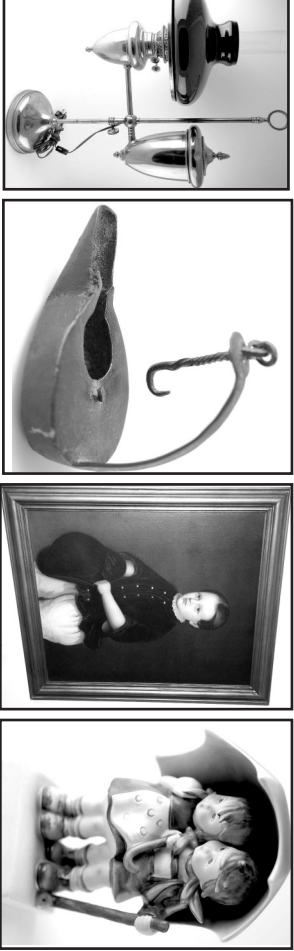
DIRECTIONS: At the Rt. 13 Bypass & Rt. 12 in Salisbury, MD travel Southeast on Rt. 12 for 0.5 mile to Nutters Crossing. Turn right & follow to Stop sign. Right on South Hampton Bridge & follow to home on right. More directions on Web from outlying areas.

Exquisite Selection of Early American Lighting/English Lighting (10 AM): Late 18th century whale fat hanging chandelier, white oil hanging reflecting lamp c. 1780, 18th Cent. candle and rush light, 18th Cent. gimbaled whale oil lantern, punch tin Paul Revere lantern, standing spring adjustable rush and candle lamp c. 1790, "The Pittsburgh" brass embossed hanging store room lamp w/orig. Towle shade, nice selection of early skaters' lamps to include cobalt and emerald, pewter whale oil lamp, kerosene tin finger lantern, miner's spike, fine selection of peg lamps, Sandwich whale oil lamps, 10" student lamp, 8" double globe student lamp, King of Diamonds brass candlesticks, Victorian bee hive push ups, 18th Cent. English side push ps, English brass dish bottom push up chamber stick, brass kerosene angle lamp w/orig. shade, brass English carry lantern, punch tin star candle box, candle molds, early American carry lantern, white opalescent Thumprint pattern glass oil, brass Honeycomb pedestal pattern glass oil, Vaseline chamber stick, cobalt Little Buttecup finger lamp, Pr of British gimbaled brass kerosene wall sconces, figural column pattern glass oil c. 1870, Pr of Carriage lanterns, Adlake PRR lantern, 1923 Cobalt RR lantern, LG RR lantern, Heart pattern finger lamp, nickel lamps, brass double globe floor model student lamp, primitive hanging candle boxes, dove-tailed candle box, and to many more too list. **Sterling/Primitives/Glassware/Dolls (10 AM):** *Sterling Silver to include: Gorham "Melrose" sterling flameover service for twelve, 8 bottle cut glass English silver condiment set, pr of teppa Mayflower cap stand candlesticks, candle racks, Gorham candleabra, sugar tongs, coin silver spoon, tea strainer, whiskey flask, sterling top jam jar, and more - 30+ Hummel figurines, tricolor Penn. coverlet, sheet iron folk art Indian weather vane, sm qty of Nestukes, ivory and gold pipe, English dove-tailed early copper teakettle w/ butler's trivet, 18th Cent. iron meat grill, LG copper apple butter kettle w/ riveted iron ring, 18th Cent. wooden candleholder w/ engraving, Penn. punch tin heart decorated carriage foot warmer, tin tinder box, cast iron horse, engraved brass bed warmer c. 1840, several mid 19th century brass pails, primitive dough bowls, split oak gather basket, salt glaze eagle and shield pitcher. **Dolls to include: Armand Marseille character doll, KR Simon & Halbig doll, Simon & Halbig baby doll, (2) German bisque head dolls, (2) antique doll carriages, folk art dolls by Peggy Nisbet, Victorian brass doll bed, primitive doll cradles, Victorian doll chest, primitive doll cupboard, antique doll mantel clock, primitive English cutlery box, Pr Towle pedestal table lamps w/ shades, cranberry and emerald English nutfiners, Victorian colored glass goblets, amber and cobalt apothecary jars, approx. 75pcs Royal Doulton "Gold Concord" pattern, Approx. 75pcs of Copeland Spode "fairydell" china, primitive fireplace tools, set of pewter dinner service for eight, German Cuckoo clock, cobalt eye wash, Rookingham Turk's head mold, Chemist Pharmacy sign, small wooden mortar and pestle, Towle Swift and Co. leaf hand tin, 4pc Danish pewter tea service, handblown hatching figural Eastern egg, 1956 Wedgwood w/ nice selection of local books, selection of antique reference books, primitive milking stool, concrete yard figures, figural lead pond fountain, cast iron duck doorstop, sink box duck and more! **MJ Hummel Figurines Including:** "Adoration" 23/1, "Good Friends" 182, "Beginning his Share" 9, "Leader" 129, "Good Hunting" 307, "Little Goat Mender" 200, "Feeding Time" 199/1, "Chimney Sweep" 12/1, "Joyous News" 111/40, "Doll Mother" 67, "Doctor" 127, "Little Hiker", "For Father" 87, "Little Sweeper" 171, "High Tono" 133, "Little Fiddler" 2/0, "Hear Year, Hear Year" 15/1, "I, axes News" 18-4, "Stormy Weather" 71, "Birthday Senenah" 218/2/0, "Little Tooter" 214/1, "Wash Day" 321, "The Artist" (repaired) 304, "Herald Angels" 37 - Chipped, "Telling her secret" 196/0, "Toothache" 217, "Playmates" 58/0, "School Boy" 82/0, "Goose Girl" 47/0 & more! **Ward Bros. Decoy*****



(11:45 AM): Ward Bros. balsa wood sleeping mallard hen. **Late 18th Century and Early 19th Century Furniture (12 Noon):** American Mahogany Chippendale shut front writing desk c. 1790, Mahogany four drawer Chippendale chest c. 1790, 18th Cent. English Cricket table, English Yew wood tavern chair, Scottish 8 day Mahogany grandfather case clock w/ hand painted face and dial c. 1830, York Co. Pennsylvania Pine and Poplar 2pc 12pane corner cabinet c. 1840, Solid Cherry 2pc 12 pane bookcase/secretary w/ slope lid c. 1880, Mahogany Q. Anne tea table c. 1790, English Q. Anne tilt top candlestand c. 1780, Cobblers's Bench, Leg Penn Dutch single board dove-tailed blanket chest w/ drawer and glove box, Penn. three drawer Pine and Poplar dry sink, (2) diminutive dove-tailed single board blanket chests w/ glove box, footed dough box w/ lid, pine tapered leg drop leaf table, single drawer stretcher base Pembroke table, Tiger Maple single drawer worktable, Federal reverse paint on glass hunt scene mirror, and more. **Late 19th Century and Modern Furniture (12 Noon):** Set of 6 Late 19th cent. English Q. Anne dining chairs, Henkel-Harris solid Cherry two drawer Q. Anne server, late 19th century Pine 8 drawer mirror cabinet, Kriminger designer's showcase table, Repro Hepplewhite Martha Washington chair, Victorian Walnut six drawer stool cabinet, Drexel American Treasures solid Cherry gateleg drop leaf dining table, Cherry two drawer Sheraton backer's chest, Mahogany repro pencil post canopy bed, J. B. Van Siver solid Cherry chest-on-chest and double tester bed, stretcher base caneback sofa, antique child's drop leaf table, child's tapered leg table w/ drawer, solid Cherry 10 drawer dresser w/ mirror, Cherry single drawer tapered leg worktable, Pr Oak Windsor back chairs, small step stool in orig. paint, Pr of Hickory Chair Co. stretcher base wing backs, Heritage Furniture Co. leather executive stretcher base wing back, three drawer poplar washstand w/ gallery, Hickory Chair Co. velvet stretcher base wing back, Penn House four drawer pad foot dining table, cane seat and back child's gooseneck rocker, Raymond C. Misher handcrafted bedside step w/ inlay, Oak plank bottom high chair, Pine reproduction lowboy, small lift top glass display table, Plaid upholstered wing back, saddle seat chair, several signed Hitchcock rush seat paint decorated chairs, (2) Pine ogee mirrors, 6pc iron porch set, glass top porch table and much more! **Rugs (Noon):** Karastan Williamsburg Restoration Kurdish area rug (8x8), Indian wool hand knotted Bokhara (6x9), Mid 20th Century Iranian Kashan (9x12), Late 20th Century Pakistan Ardabil (4.9 x 5), Late 20th century Pakistan Kashan (4.9 x 6.10), Last quarter 20th century Mehrab prayer rug (2x3), Iranian Kirman c. 1970 (3x 4.9), Persian Hamadan c. 1925 (7.8 x 4.4), Iranian Kirman prayer rug c. 1970 (1.8 x 2.1), Last quarter 20th century Pakistan Bijar (3.7 x 4.1), Iranian Kirman (4 x 6.5), Indian Heriz (6 x 9), Last quarter 20th century Bijar (3 x 3.9), Heriz prayer rug (2 x 1.1), Iranian Kerman (4 x 6.5) & others! **Santplers/Artwork to be sold with furniture:** 1809 and 1831 framed Delaware Valley samplers, Child's portrait painting c. 1810, portrait of young woman c. 1820, framed watercolor fruit theorem, Edward Kuhlmann 24x17 watercolor, Edward Kuhlmann 20x24 oil on artist board, Leg decorative Chinese silk framed mural, set of 7 Vanity Fair colonial liths, "Evening at Klemers" by Andrew Wyeth framed print, J.J. Audubon Great American Cock (Wild Turkey) framed print, 1938 Map of Millford, DE by William P. Richards, "Goldeneye" framed orig. art by Carmelo Ciancio, hand colored squirrel lithographs, several prints and more.

TERMS PERSONAL PROPERTY: Cash Or Approved Check Day of sale. Visa/MC/Amex/Discover. 13% Buyer Premium. 3% Discount for cash or check. Everything Sold "As Is" with no warranties of any kind. Auction conducted on-site. Two Auctioneers. Some seating provided. Food served by Black Diamond Catering of Salisbury, Maryland. Online Catalog and Bidding available via PROXBID. **PREVIEW:** Saturday morning Nov. 21st from 8 - 10 AM.



Online Bidding
 Powered by
Proxibid
 Auctioneer

View Website for Additional Information, Directions, Online bidding & 600 Pictures!
Allen & Marshall • Auctioneers and Appraisers, LLC
 "The Auction Experts"
Dave Allen, Auctioneer 410-835-0384 • www.MarshallAuctions.com